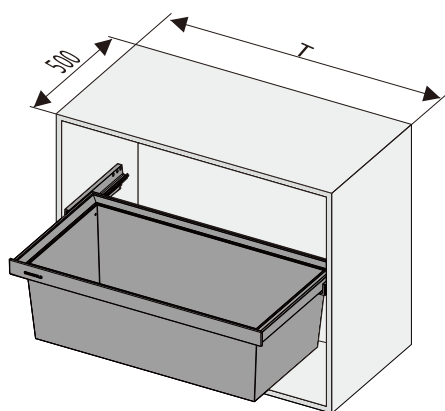
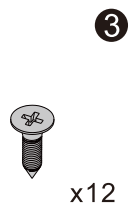
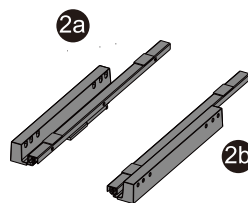
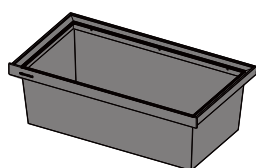


# A系列产品安装说明书

(本说明书适用于皮篮)

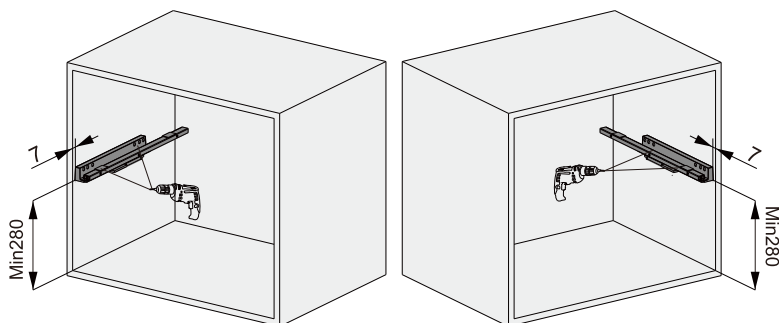


## 配件

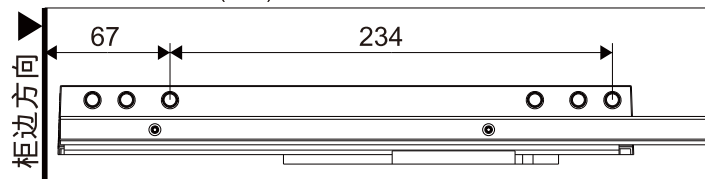


## 1 导轨安装

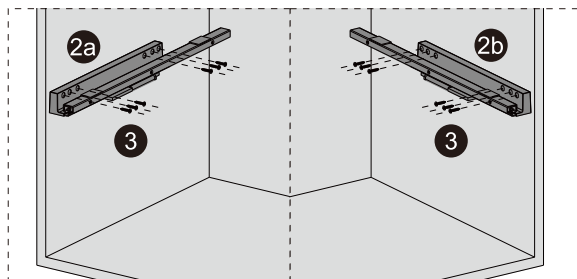
### 1.1 按尺寸预钻滑轨定位孔 $\phi 2.5 \times 12$



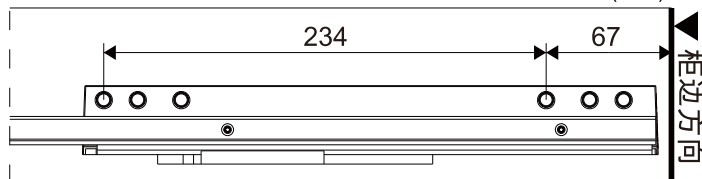
定位孔位置尺寸 (左)



### 1.2 安装滑轨(左/右)

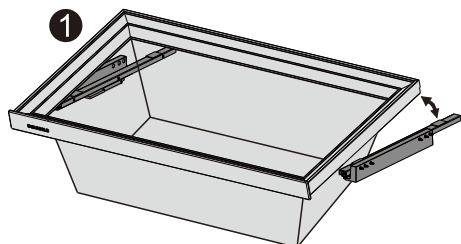


定位孔位置尺寸 (右)

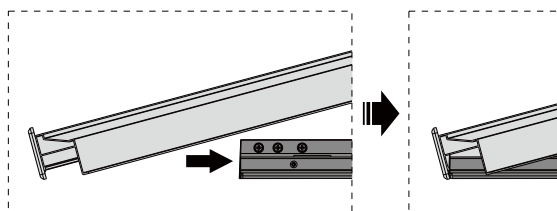


## 2 框架安装

### 2.1 把框架 (含皮篮) 后端斜举



### 2.2 将框架推至与滑轨前端贴近后放平框架并压紧魔术贴



### 2.3 安装完毕

